



Primary Health Care 2014 and beyond

Anna Gibson-Olajos, Executive Director

May 3, 2014

How we got a Family Health Team

- June 2010 – MoPED, Municipality of Powassan submitted application for a Family Health Team
- September 2010 – Awarded a Family Health Team
- January 2011 – Incorporated Powassan & Area Family Health Team
- Spring 2011 – Physicians formed Maple Ridge Family Health Organization
- May 2011 – Opened Powassan & Area Family Health Team

Family Health Team Structure

Family Health Team

```
graph TD; A[Family Health Team] --> B[Family Health Team (FHT)]; A --> C[Family Health Organization (FHO)];
```

Family Health Team (FHT)

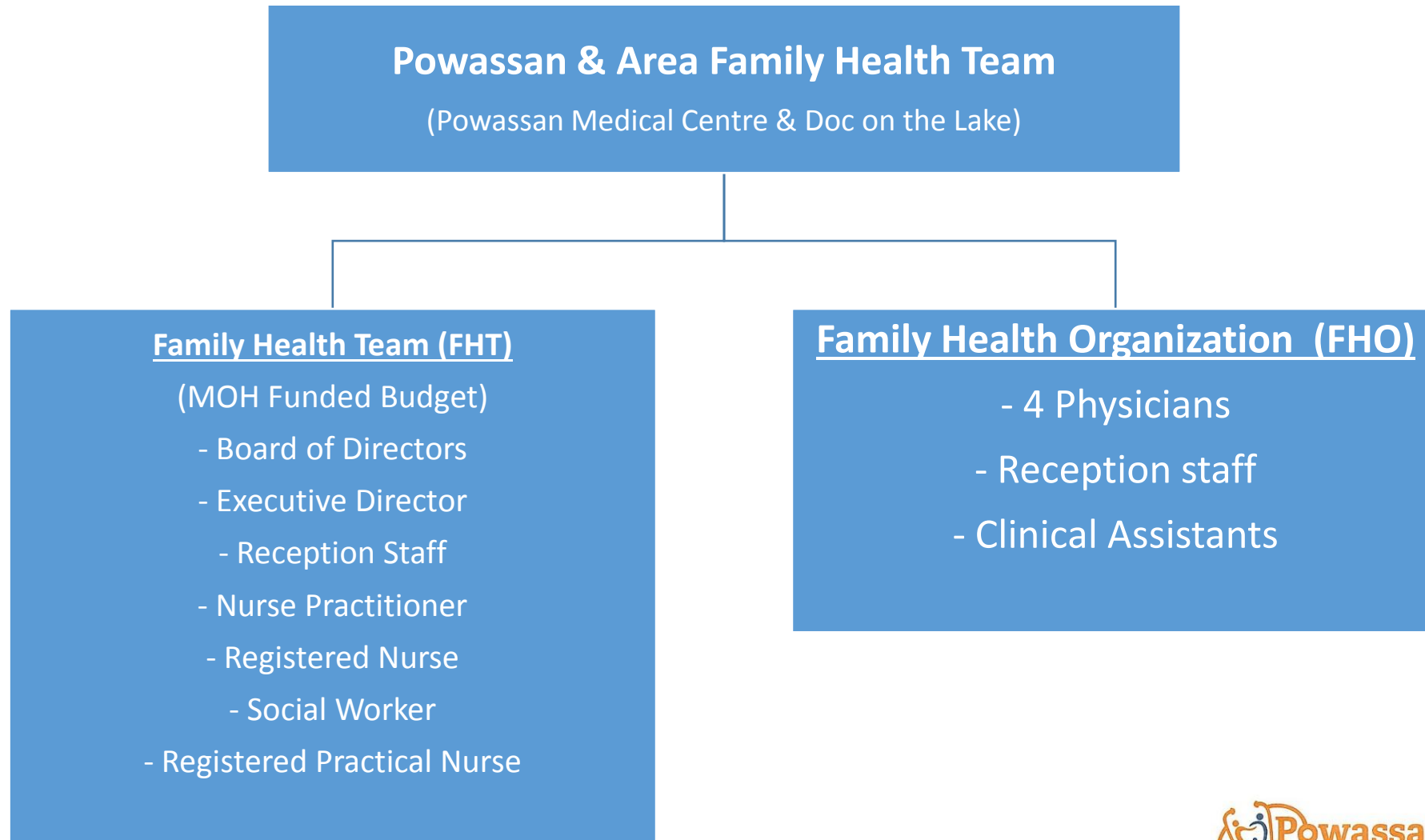
(MOH Funded Budget)

- Board of Directors
- Admin Staff
- Interdisciplinary Health Providers (IHPs)

Family Health Organization (FHO)

- Physicians
- Physician Staff

Our Family Health Team Structure



Who do we serve?

- Over 5,000 patients
- Programs and services are only available to patients of physicians who are with the Powassan & Area Family Health Team
 - Dr. Scott Houghton
 - Dr. John Seguin
 - Dr. Scot Salstone
 - Dr. Larry Woodward
- Attract a new physician = more people get access to our programs & services

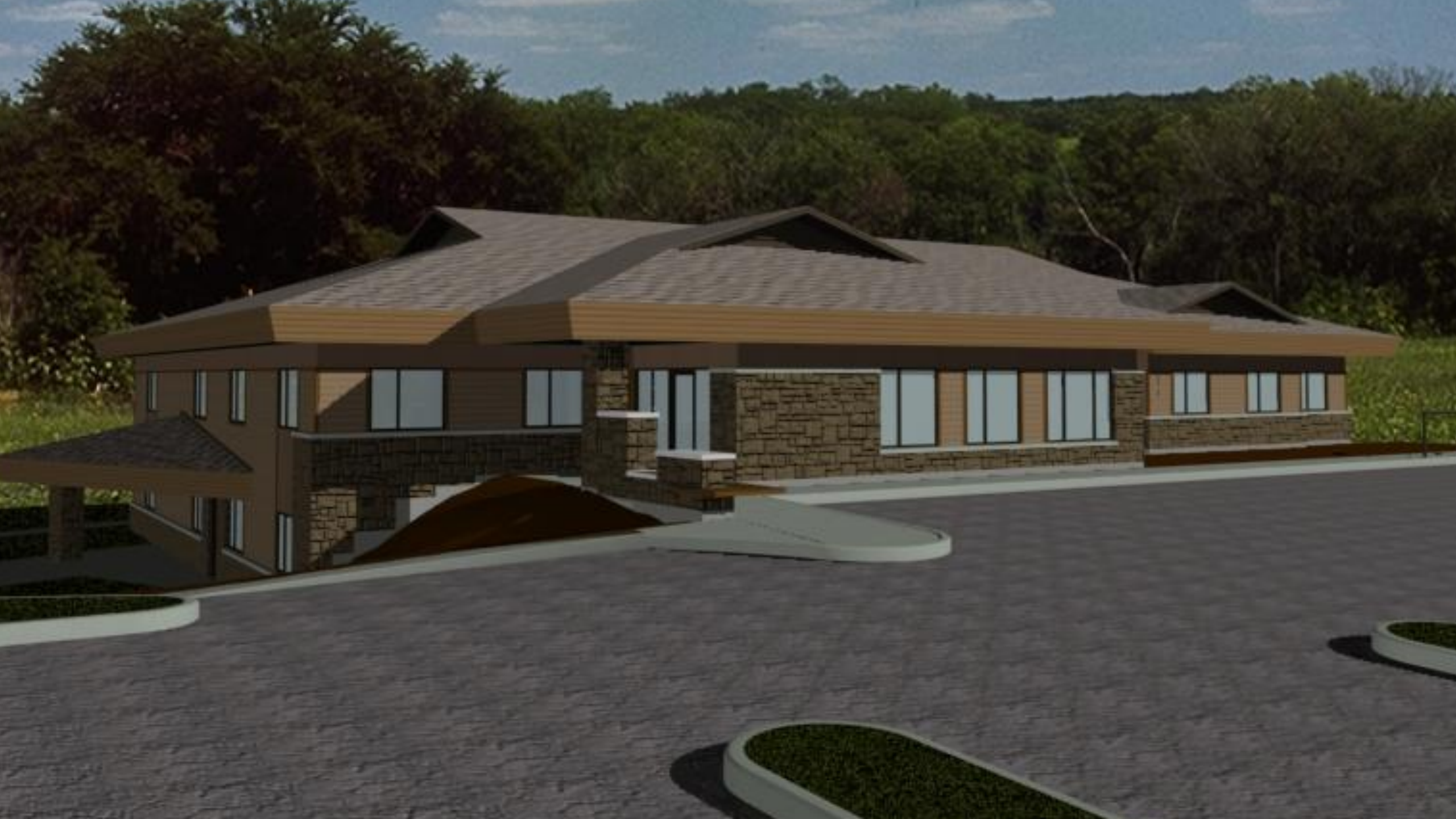
Our sites

- **Powassan Medical Centre, Powassan**
 - Executive Director, Reception Staff
 - MDs, NP, SW, RN, RPN, Clinical Assistants

- **Doc on the Lake Clinic, Astorville**
 - Reception Staff
 - MD, NP, SW, Clinical Assistants

Proposed New Site

- Current Powassan Medical Centre no longer meets our growing needs
 - Was built for 2-3 physicians, 2 reception staff (~5)
 - Currently: 3 physicians, NP, RN, SW, RPN, 5 reception/admin, ED (~14)
- New facility is designed for current and future needs
 - Space for additional physicians
 - Space for additional interdisciplinary health care providers
 - Designed for new model of collaborative practice
 - Space for meetings and patient groups and education sessions
 - Will be a recruitment and retention tool for new physicians and other health care professionals



Site Funding Structure

<p>Family Health Team 50% funding</p> <p>SECURED</p> <p>\$170,000 yr/10yrs (lease & soft costs)</p>	<p>Physicians FHO 50% funding</p> <p>?</p> <p>\$170,000 yr/10yrs (lease & soft costs)</p>
--	--

Proposed New Site: Current Status Unknown

- Funding for FHT 50% has been secured from MOHLTC since 2012
- Funding for FHO (physicians) 50% needs to be secured
- If we don't have building commenced by March 31, 2015 we will lose the FHT portion of the funding and therefore the opportunity to build this facility

More Space = More Health Care options

- Group education sessions
- Group appointments
- Additional practitioners
- Better patient flow in the clinic
- Physician recruitment and retention
- Continuing medical education (medical students)
 - the importance of bringing medical students, resident, or and locums to your community
- Additional physicians means more people in our region can benefit from PAAFHT programs and services

HealthForceOntario

It is not only the professional practice but also the community itself that determines whether an opportunity is attractive enough to attract qualified candidates.



Ontario

HealthForceOntario Marketing
and Recruitment Agency

Agence de promotion
et de recrutement
de ProfessionsSantéOntario

Fundamentals Community Based Recruitment

- Know your community assets
- A community that exhibits pride in itself as evidenced by the people the candidates meet
- A team approach to the effort by professional & community involvement on the recruiting team
- A demonstrated need for the physician in the community
- Resources to support the practice, lure and retain the professional



Ontario

HealthForceOntario Marketing
and Recruitment Agency

Agence de promotion
et de recrutement
de ProfessionsSantéOntario

Important Key Points to Physicians

Physicians are people too!

- Feel welcome and part of the community in the long term
- Work/life balance
- Practice tailored to their needs
- Proper facility - EMR
- Part of a team
- Relocation assistance
- Incentive to attract & retain



Ontario

HealthForceOntario Marketing
and Recruitment Agency

Agence de promotion
et de recrutement
de ProfessionsSantéOntario

Health Care & Economic Development

- Primary Health Care Hub - health clinic in our community attracts spending
 - Stores & Services
 - Pharmacies
 - Banking
- Selling our community – what do people look for in a place to live?
 - Jobs
 - Quality of life
 - Recreation
 - Schools
 - Primary health care hub!

Recruitment & Retention Committee

- Regional Recruitment & Retention Committee
- Physicians can go anywhere they want, why would they pick our region
- Attracting medical students, residents, and/or locums (“supply teacher” for physicians) is important as these can be our future recruits!
- Retention of current physicians
- Vibrant communities are a key element in attracting health care professionals

2014 and Beyond

- Recruitment and Retention needs to start and be ongoing
- New facility

- The electronic reality and future of health care
- Current programs and services
- Collaboration
- What can the future hold

Health Care Information technology

- Electronic Medical Records – population health
- Meditech – Hospital connection
- Ontario Telemedicine Network – access to specialists
- Physician Office Integration – faster access, easier integration
- Ontario Laboratory Information Service – faster access, Ontario wide
- Quality Improvement Decision Support – support, collaboration, QI
- Primary Care Indicators – tracking and comparing
- Community Care Access Centre Client View - integration

Current Programs & Services

- Diabetes
 - population health, planned & prepared, group visits
- Memory Clinic
 - wrapping care around patients and their families
- Hypertension Screening
 - population health, prevention
- Preventative Care
 - cancer screening
- Well baby
 - immunization follow up

Current Programs & Services

- Flu clinics
 - increased access
- Blood Lab in Powassan & Astorville
 - 3 days per week
- Evening clinics
 - 4 evenings per week
- Ontario Telemedicine Network
 - access from Powassan to specialists across Ontario
- Patient Education slide show
 - Powassan and soon Astorville
- www.paafht.ca coming soon

Collaboration – making health care simple

- Association of Family Health Teams of Ontario (AFHTO)
- Northeastern FHT Executive Directors
- Community Care Access Centre
- NorthEast Geriatric Centre
- North Bay Regional Health Centre
- HealthForceOntario Marketing & Recruitment Agency
- Ontario Telemedicine Network
- Proposed Nipissing Health Link

What can the future hold?

- New Facility
- More programs
- Enhanced management of population health through EMR
- Increased integration with other health agencies
- Increased access
- Manage your Health Passports
- Group appointments
- Group sessions (for example a grief group)
- Increased Ontario Telemedicine Network options
 - Seeing an oncologist via OTN at our clinic
 - Consult specialists from other cities from Powassan
- Additional providers

Thank you!

Questions?

Anna Gibson-Olajos

Executive Director

705-724-1020

agibsonolajos@paafht.ca